

全球领先的精密测量技术 您身边可信赖的计量专家
The Revolutionary Precision Measuring Technology

From USA

Coordinate Measuring Machine
3D Laser Scanner
Video Coordinate Measuring Machine



leader® 美国总部

Head Office America: 2423 Computer & Space Building
College Park, Maryland USA 20742
301.405.8253 TEL 301.314.9482 FAX

中美合资青岛雷顿数控测量设备有限公司
青岛雷顿精密机械有限公司

CHINA-US JOINT ENTERPRISE QINGDAO LEADER METROLOGY INSTRUMENTS CO., LTD

Add: No.8, Changbai shan RD, Qingdao International
Airport Industry Park, 266108, P.R.China
Tel: 86-532-87716001 87716003 87716005
Sale: 400-658-0306 86-532-87716016
Service: 400-658-0316 85-532-87716004
Fax: 86-532-87716002
Postalcode: 266108
www.leadermetrology.com
E-mail: info@leader-nc.com.cn



ABOUT US

关于我们



Qingdao Leader Metrology Instruments Co., Ltd.(Leader Metrology) is set up by professor Mr. Wang in 1999. We are professional with designing, manufacturing and service of Coordinate Measuring Machine (CMM), 3D laser scanner etc. After 18 years work we have designed 8 series full automatic, high accuracy coordinate measuring machine which sells well and bring us good honor.

Leader Metrology is earliest company combining laser scanning technology, CCD digital video measuring technology and traditional contact Coordinate Measuring Machine (CMM) technology to one machine. This greatly expands the using area of CMM, and makes it both a measuring center and an assistant for new product designing.

We deploy Renishaw controller, probe system and Rational DMIS on our coordinate measuring machine (CMM) which can satisfy customer's needs perfectly and our products are variously used in automobile industry, aviation, machine tools, national defense, mold etc.

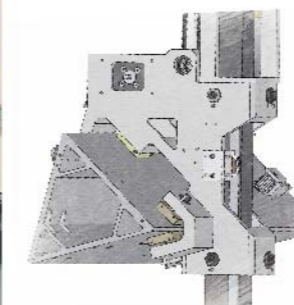
We are strict with measuring our Coordinate Measuring Machine (CMM) before shipment by Renishaw laser, and we have passed and followed ISO9001, CE certificate to promise our customer very good quality and stable performance. As a world-class Coordinate Measuring Machine (CMM) manufacturer, Leader Metrology commit to improve our quality, we will give our customer best added value and get development with our customer together.





Tornado Series CMM

THE HIGH EFFICIENT SOLUTION
FOR WORKPIECE INSPECTION



Tornado series CMM is made of aviation grade aluminum alloy, which could be able to locate and measure workpiece at an extremely fast speed, meets customer requirements for high measurement efficiency.

Performance Characteristics

- Four-sided air-floating structure used in Y axis, eliminating the movement of torsion pendulum to ensure that the machine's high rigidity, and high stability.
- Y-axis drive near the movement center, the main support lighter, thereby reducing the weight of moving parts to ensure that the machine's high-speed and high stability.
- Precision triangular beam technology is applied to Axis X, with aviation grade aluminum alloy, featuring lower center of gravity, better mass-rigidity ratio and more reliable motion relative to rectangular and cross beams.
- Z-axis and carriage are all adopted to the aviation grade aluminum alloy material, ensuring the same expansion technology, working in more harsh temperature environment.

MODEL	STROKES			MEASURING ACCURACY ISO10360-2:2009/GB/T16857.2-2006		OVERALL SIZE			WORK ENVELOPE			WEIGHT kg	PART WEIGHT kg	3D Max Speed (mm/s)	3D Max Accelerated Speed (mm/s ²)
	X	Y	Z	S		Lx	Ly	Lz	Wx	Wy	Wz				
	mm	mm	mm	MPEE(um)	MPEP(um)	mm	mm	mm	mm	mm	mm				
NCA454	400	500	400	2.1+3.3L/1000	2.2	1000	1240	2240	525	995	600	570	500	750	1800
NCA564	500	600	400	2.1+3.3L/1000	2.2	1100	1340	2240	625	1095	600	700	500	750	1800
NCA686	600	800	600	2.2+3.3L/1000	2.3	1200	1650	2660	730	1400	800	960	700	750	1800
NCA8106	800	1000	600	2.2+3.3L/1000	2.3	1400	1850	2660	930	1600	800	1270	1000	750	1800
NCA8156	800	1500	600	2.2+3.3L/1000	2.3	1400	2350	2660	930	2100	800	1600	1000	750	1800
NCA10128	1000	1200	800	2.7+3.3L/1000	2.7	1690	2370	3150	1190	1814	1040	2460	1800	530	1750
NCA10158	1000	1500	800	2.7+3.3L/1000	2.7	1690	2670	3150	1190	2114	1040	2820	1800	530	1750
NCA10208	1000	2000	800	2.7+3.3L/1000	2.7	1690	3270	3150	1190	2614	1040	3410	1800	530	1750
NCA121510	1200	1500	1000	3.0+3.3L/1000	3.0	1890	2750	3330	1390	2200	1200	3330	2000	450	1050
NCA122010	1200	2000	1000	3.0+3.3L/1000	3.0	1890	3350	3330	1390	2700	1200	3910	2000	450	1050
NCA152010	1500	2000	1000	3.3+3.3L/1000	3.3	2190	3350	3370	1690	2700	1200	5220	3000	450	1050
NCA152510	1500	2500	1000	3.3+3.3L/1000	3.3	2190	3850	3400	1690	3200	1200	6680	3000	450	1050
NCA153010	1500	3000	1000	3.5+4L/1000	3.5	2260	3910	3420	1690	3700	1200	8120	3000	400	1050
NCA152512	1500	2500	1200	3.5+4L/1000	3.5	2190	3850	3870	1690	3200	1400	6730	3000	400	1050
NCA153512	1500	3500	1200	3.8+4L/1000	3.8	2260	4410	3890	1690	4200	1400	9200	3000	400	1050
NCA15XX12	1500	XX	1200	from 3.8+4L/1000	from 3.8	2255	XX	3890	1690	XX	1400	XX	XX	XX	XX
NCA152515	1500	2500	1500	3.8+4L/1000	3.8	2190	3980	4500	1680	3330	1700	6950	3000	350	850
NCA153015	1500	3000	1500	4.0+4L/1000	4.0	2260	4040	4520	1680	3830	1700	8440	3000	350	850
NCA163515	1600	3500	1500	4.0+4L/1000	4.0	2360	4540	4520	1780	4330	1700	9960	3000	350	850
NCA16XX15	1600	XX	1500	from 4.0+4L/1000	from 4.0	2360	XX	4520	1780	XX	1700	XX	XX	XX	XX
NCA203015	2000	3000	1500	5.0+4L/1000	5.0	2760	4240	4520	2180	3930	1700	11200	3000	350	850

- Power Voltage: 220V
- Air Pressure: 0.5-1.0Mpa
- Filter Accuracy: 0.3μm
- Air Supply: 0.3-0.45m³/min

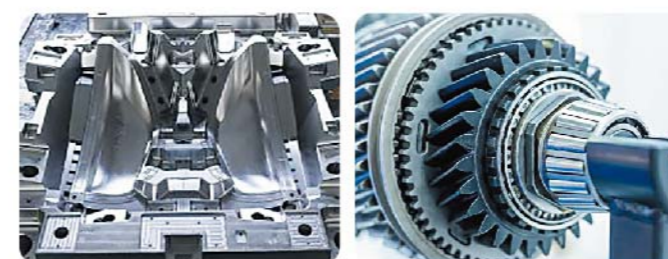
- Temperature Range: 18-22°C
- Hourly Temperature Cycle: 1°C/h
- Thermal Gradient: 1°C/m
- Relative Humidity: 45%-75%

Cruiser Series CMM

THE HIGH ACCURACY SOLUTION FOR BIG WORKPIECE INSPECTION



Cruiser series CMM offers maximum measurement volume for large work-pieces. Advanced means and methods which are designed by professional software, analyzed by finite element and dynamic property etc ensure measuring high stability and accuracy.



Fixed L shape bridge structure of the movable work table has a spacious measurement space, furthermore, Cruiser series CMM changes in pitch and yaw are minimized during operation, which greatly improves the measurement accuracy and precision stability.

MODEL	STROKES			MEASURING ACCURACY ISO10360-2:2009/GB/T16857.2-2006				OVERALL SIZE			WORK ENVELOPE			WEIGHT	PART WEIGHT
	X	Y	Z	S		P		Lx	Ly	Lz	Wx	Wy	Wz	kg	kg
	mm	mm	mm	MPEE(um)	MPEP(um)	MPEE(um)	MPEP(um)	mm	mm	mm	mm	mm	mm		
NCL152010	1500	2000	1000	3.0+3L/1000	3.5	2.5+3L/1000	2.5	2700	3800	3700	1700	2200	1200	9300	4000
NCL152510	1500	2500	1000	3.0+3L/1000	3.5	2.5+3L/1000	2.5	2700	4300	3700	1700	2700	1200	10500	4000
NCL153010	1500	3000	1000	3.0+3L/1000	3.5	2.5+3L/1000	2.5	2700	4800	3700	1700	3200	1200	11400	4000
NCL15XX10	1500	XX	1000	from 3.0+3L/1000	from 3.5	from 2.5+3L/1000	from 2.5	2700	XX	3700	1700	XX	1200	XX	XX
NCL152012	1500	2000	1200	3.3+4L/1000	3.5	2.9+3L/1000	3.0	2700	3800	4100	1700	2200	1400	9800	4000
NCL152512	1500	2500	1200	3.3+4L/1000	3.5	2.9+3L/1000	3.0	2700	4300	4100	1700	2700	1400	10900	4000
NCL153012	1500	3000	1200	3.3+4L/1000	3.5	2.9+3L/1000	3.0	2700	4800	4100	1700	3200	1400	11500	4000
NCL15XX12	1500	XX	1200	from 3.3+4L/1000	from 3.5	from 2.9+3L/1000	from 3.0	2700	XX	4100	1700	XX	1400	XX	XX
NCL152015	1500	2000	1500	3.8+4L/1000	4.0	3.2+3L/1000	3.5	2700	3800	4650	1700	2200	1700	10000	4000
NCL152515	1500	2500	1500	3.8+4L/1000	4.0	3.2+3L/1000	3.5	2700	4300	4650	1700	2700	1700	11300	4000
NCL153015	1500	3000	1500	3.8+4L/1000	4.0	3.2+3L/1000	3.5	2700	4800	4650	1700	3200	1700	12200	4000
NCL15XX15	1500	XX	1500	from 3.8+4L/1000	from 4.0	from 3.8+3L/1000	from 3.5	2700	XX	4650	1700	XX	1700	XX	XX
NCL163015	1600	3000	1500	4+4L/1000	4.2	3.5+3L/1000	3.8	2800	4800	4650	1800	3200	1700	13200	4000
NCL16XX15	1600	XX	1500	from 4+4L/1000	from 4.2	from 3.5+3L/1000	from 3.8	2800	XX	4650	1800	XX	1700	XX	XX

- Power Voltage: 220V
- Air Pressure: 0.5-1.0Mpa
- Filter Accuracy: 0.3μm
- Air Supply: 0.3-0.45m³/min
- Temperature Range: 18-22°C
- Hourly Temperature Cycle: 1°C/h
- Thermal Gradient: 1°C/m
- Relative Humidity: 55%-65%

Navigator Series CMM

THE HIGH VERACITY SOLVENT FOR ENORMOUS PARTS INSPECTION



Navigator Series Gantry type CMM has feature of high accuracy, high strength, high rigidity and good stability. It suits for accuracy inspection of enormous parts, such as automobile, aviation, vessels and big molds.

Navigator series CMM have many safety facilities, high safety in operating. It has high power transmission system. The double scales and driving system and multi-axis coordinated scanning technology assure of the measurement accuracy of enormous and complicated workpiece.



MODEL	STROKES			MEASURING ACCURACY ISO10360-2:2009/GB/T16857.2-2006				OVERALL SIZE			WEIGHT kg	PART SIZE		
	X	Y	Z	S		P		Lx	Ly	Lz		Lx	Ly	Lz
	mm	mm	mm	MPEE(um)	MPEP(um)	MPEE(um)	MPEP(um)	mm	mm	mm	mm	mm	mm	mm
NCG203015	2000	3000	1500	5.0+5L/1000	5.0	3.5+4L/1000	4.0	3490	4770	4370	9800	2350	3500	1690
NCG204015	2000	4000	1500	5.0+5L/1000	5.0	3.5+4L/1000	4.0	3490	5770	4370	10700	2350	4500	1690
NCG205015	2000	5000	1500	5.0+5L/1000	5.0	3.5+4L/1000	4.0	3490	6770	4370	13490	2350	5500	1690
NCG20XX15	2000	XX	1500	from 5.0+5L/1000	from 5.0	from 3.5+4L/1000	from 4.0	3490	XX	4370	XX	2350	XX	1690
NCG253015	2500	3000	1500	8.0+8L/1000	8.0	5.0+5L/1000	6.0	3990	4770	4370	9870	2850	3500	1690
NCG254015	2500	4000	1500	8.0+8L/1000	8.0	5.0+5L/1000	6.0	3990	5770	4370	10800	2850	4500	1690
NCG255015	2500	5000	1500	8.0+8L/1000	8.0	5.0+5L/1000	6.0	3990	6770	4370	13560	2850	5500	1690
NCG25XX15	2500	XX	1500	from 8.0+9L/1000	from 8.0	from 5.0+5L/1000	from 6.0	3990	XX	4370	XX	2850	XX	1690
NCG203020	2000	3000	2000	6.0+6L/1000	7.0	5.0+5L/1000	6.0	3490	4770	5370	9810	2350	3500	2100
NCG20XX20	2000	XX	2000	from 6.0+7L/1000	from 7.0	from 5.0+5L/1000	from 6.0	3490	XX	5370	XX	2350	XX	2100
NCG255018	2500	5000	1800	10.0+10L/1000	10.0	6.0+6L/1000	7.0	3990	6770	4970	14200	2850	5500	1950
NCG256018	2500	6000	1800	10.0+10L/1000	10.0	6.0+6L/1000	7.0	3990	7770	4970	15400	2850	6500	1950
NCG253020	2500	3000	2000	10.0+10L/1000	10.0	6.0+6L/1000	7.0	3990	4770	5370	10600	2850	3500	2100
NCG25XX20	2500	XX	2000	from 10.0+12L/1000	from 12.0	from 6.0+6L/1000	from 7.0	3990	XX	5370	XX	2850	XX	2100
NCG306020	3000	6000	2000	12.0+12L/1000	12.0	8.0+8L/1000	8.0	4990	7770	5370	16200	3350	6500	2100
NCG30XX20	3000	XX	2000	from 12.0+12L/1000	from 12.0	from 8.0+8L/1000	from 8.0	4990	XX	5370	XX	3350	XX	2100

- Power Voltage:220V
- Air Pressure:0.5-1.0Mpa
- Filter Accuracy:0.3μm
- Air Supply:0.3-0.45m³/min
- Temperature Range:18-22°C
- Hourly Temperature Cycle:1°C/h
- Thermal Gradient:1°C/m
- Relative Humidity:55%-65%

ExcellentSeries CMM

REPRESENTATIVE OF HIGH ACCURACY
COORDINATE MEASURING MACHINE



Tornado-P Series CMM is specially used for measuring ultra-precision and ultra complicated parts, such as medical device, satellite, aero-engine, blade, automobile precision parts etc.

Tornado-P Series CMM adopts high precision scale, control system and temperate compensation system. It can deploy not only scanning probe and Revo probe but also deploy automatic mechanical arm and automatic loading system. The most accurate measurement results will make the production of such parts easier and more precise.



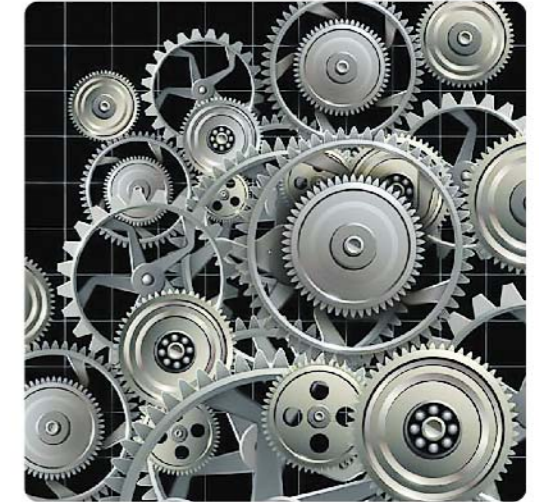
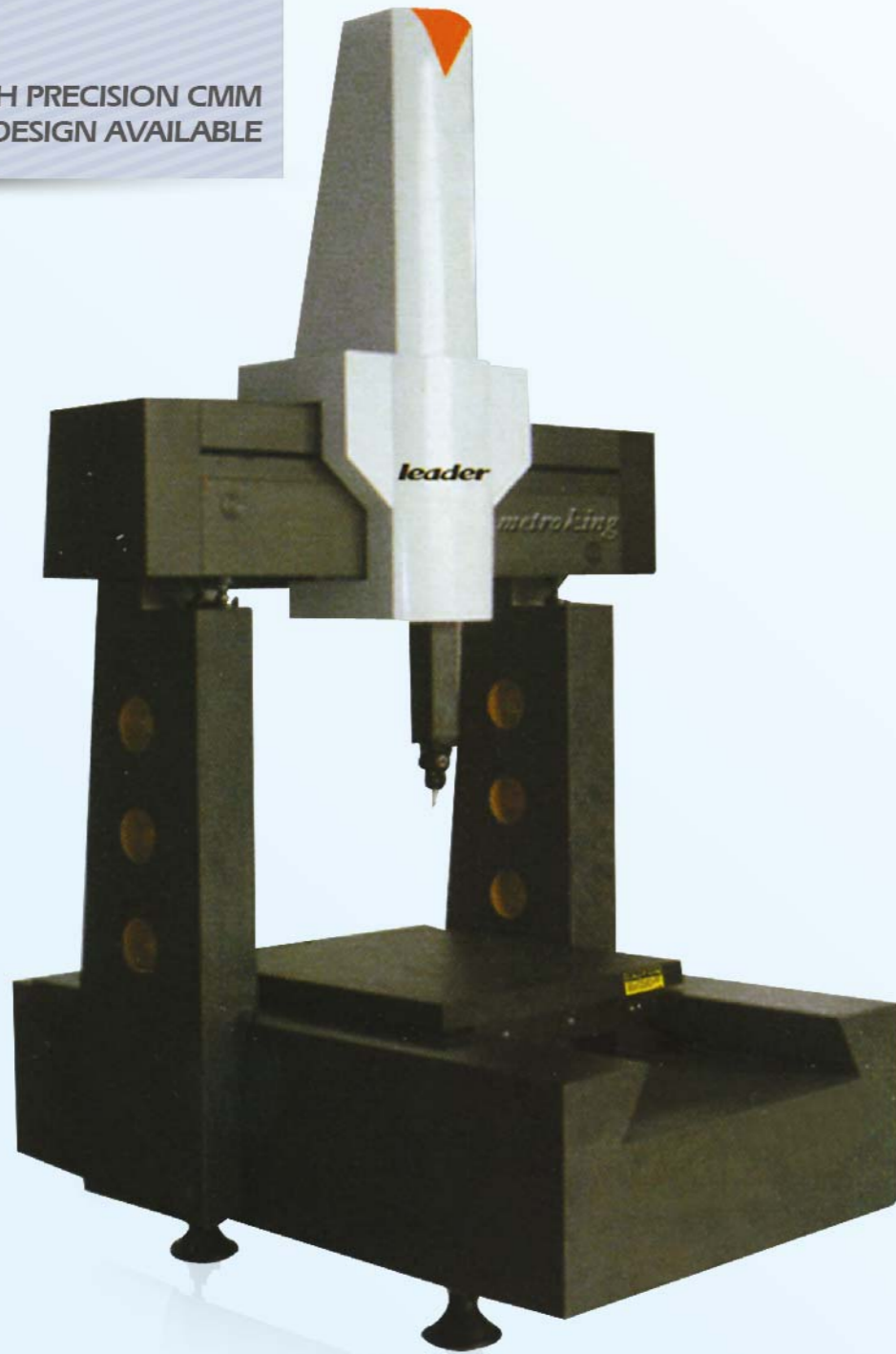
MODEL	STROKES			MEASURING ACCURACY ISO10360-2:2001/GB/T16857.2-2006				OVERALL SIZE			WORK ENVELOPE			WEIGHT kg	PART WEIGHT kg	3D Max Speed (mm/s)	3D Max Accelerated Speed (mm/s ²)
	X	Y	Z	P		PH		Lx	Ly	Lz	Wx	Wy	Wz				
	mm	mm	mm	MPEE(μm)	MPEP(μm)	MPEE(um)	MPEP(um)	mm	mm	mm	mm	mm	mm				
NCE454	400	500	400	1.3+3L/1000	1.3	1.2+3L/1000	1.2	1000	1240	2240	525	995	600	590	500	800	1900
NCE564	500	600	400	1.3+3L/1000	1.3	1.2+3L/1000	1.2	1100	1340	2240	625	1095	600	720	500	800	1900
NCE686	600	800	600	1.5+3L/1000	1.5	1.3+3L/1000	1.3	1200	1650	2660	730	1400	800	980	700	800	1900
NCE8106	800	1000	600	1.7+3L/1000	1.7	1.4+3L/1000	1.4	1400	1850	2660	930	1600	800	1290	1000	800	1900
NCE8156	800	1500	600	1.7+3L/1000	1.7	1.4+3L/1000	1.4	1400	2350	2660	930	2100	800	1620	1000	800	1900
NCE10128	1000	1200	800	1.9+3L/1000	1.9	1.5+3L/1000	1.5	1690	2370	3150	1190	1814	1040	2490	1800	580	1800
NCE10158	1000	1500	800	1.9+3L/1000	1.9	1.5+3L/1000	1.5	1690	2670	3150	1190	2114	1040	2850	1800	580	1800
NCE10208	1000	2000	800	1.9+3L/1000	1.9	1.5+3L/1000	1.5	1690	3270	3150	1190	2614	1040	3440	1800	580	1800
NCE121510	1200	1500	1000	2.2+3L/1000	2.2	1.9+3L/1000	1.9	1890	2750	3330	1390	2200	1200	3370	2000	500	1100
NCE122010	1200	2000	1000	2.2+3L/1000	2.2	1.9+3L/1000	1.9	1890	3350	3330	1390	2700	1200	3950	2000	500	1100
NCE152010	1500	2000	1000	2.8+3L/1000	2.8	2.5+3L/1000	2.5	2190	3350	3370	1690	2700	1200	5260	3000	500	1100
NCE152512	1500	2500	1200	3.2+3L/1000	3.2	2.9+3L/1000	2.8	2190	3850	3870	1690	3200	1400	6770	3000	450	1100
NCE153010	1500	3000	1000	3.2+3L/1000	3.2	2.9+3L/1000	2.8	2260	3910	3420	1690	3700	1200	8160	3000	450	1100
NCE153512	1500	3500	1200	3.5+3L/1000	3.5	2.9+3L/1000	3.0	2260	4410	3890	1690	4200	1400	9250	3000	450	1100
NCE152515	1500	2500	1500	3.5+3L/1000	3.2	3.2+3L/1000	2.8	2190	3980	4500	1680	3330	1700	7000	3000	400	900
NCE153015	1500	3000	1500	3.5+3L/1000	3.5	3.2+3L/1000	3.0	2260	4040	4520	1680	3830	1700	8490	3000	400	900
NCE163515	1600	3500	1500	3.5+3L/1000	3.5	3.2+3L/1000	3.0	2360	4540	4520	1780	4330	1700	10010	3000	400	900
NCE203015	2000	3000	1500	4.0+4L/1000	4.0	3.5+3L/1000	3.5	2760	4240	4520	2180	3930	1700	11250	3000	400	900

- Power Voltage:220V
- Air Pressure:0.5-1.0Mpa
- Filter Accuracy:0.3μm
- Air Supply:0.12-0.45m³/min

- Temperature Range:19-21°C
- Hourly Temperature Cycle:0.5°C/h
- Thermal Gradient:0.5°C/m
- Relative Humidity:55%-65%

Metroking Series CMM

ULTRA HIGH PRECISION CMM
DESIGN AVAILABLE



Best matching Abbe Metrology Principle, Metroking series CMM is regarded as a pattern of high-precision measuring machine. With unparalleled accuracy and stability, it can meet the needs of scanning and measuring arbitrates in the precision parts and high-precision surface.

MODEL	STROKES			MEASURING ACCURACY ISO10360-2:2001/GB/T16857.2-2006		OVERALL SIZE			WORK ENVELOPE			WEIGHT kg	PART WEIGHT kg
	X	Y	Z	S		Lx	Ly	Lz	Wx	Wy	Wz		
	mm	mm	mm	MPEE(um)	MPEP(um)	mm	mm	mm	mm	mm	mm		
NCF553	500	500	300	0.8+L/400	1.0	1600	1400	2550	600	600	400	6000	300
NCF564	500	600	400	1.0+L/400	1.2	1600	1600	2750	600	700	500	6200	350
NCF686	600	800	600	1.0+L/400	1.2	1700	2000	3150	700	900	700	7200	600
NCF8106	800	1000	600	1.0+L/400	1.2	1900	2400	3150	900	1100	700	7800	700

- Power Voltage: 220V
- Air Pressure: 0.5-1.0Mpa
- Filter Accuracy: 0.3μm
- Air Supply: 0.12-0.45m³/min

- Temperature Range: 19-21°C
- Hourly Temperature Cycle: 0.5°C/h
- Thermal Gradient: 0.5°C/m
- Relative Humidity: 55%-65%

Miracle Series CMM

REPRESENTATIVE OF COORDINATE MEASURING MACHINE



Miracle series CMM is classically designed by Leader Company which has proprietary intellectual property rights, it has best cost performance, satisfy inspecting of small or middle parts, it has advantages of simple, rapid, efficiency and powerful function.

Miracle series CMM can be equipped with contact and non-contact probe system. All three axes are made of high performance granite; our CMM have same characteristic in temperature and rigidity and using world famous controller system. probe system, pneumatic system and transmission system, which achieve professional, mature and leading quality of Leader CMM.

MODEL	STROKES			MEASURING ACCURACY ISO10360-2:2009/GB/T16857.2-2006		OVERALL SIZE			WORK ENVELOPE			WEIGHT kg	PART WEIGHT kg
	X	Y	Z	S		Lx	Ly	Lz	Wx	Wy	Wz		
	mm	mm	mm	MPEE(um)	MPEP(um)	mm	mm	mm	mm	mm	mm		
NC564	500	600	400	2.1+3.3L/1000	2.2	1350	1475	2300	600	700	500	1140	500
NC685	600	800	500	2.3+3.3L/1000	2.3	1450	1750	2500	700	900	600	1400	700
NC6105	600	1000	500	2.3+3.3L/1000	2.3	1450	1950	2500	700	1100	600	1530	1000
NC787	700	800	700	2.4+3.3L/1000	2.4	1450	1850	3000	800	900	800	1780	1000
NC8107	800	1000	700	2.5+3.3L/1000	2.5	1550	2050	3000	900	1100	800	2100	1000
NC8157	800	1500	700	2.7+3.3L/1000	2.7	1550	2550	3000	900	1600	800	2580	1000
NC10128	1000	1200	800	2.9+3.3L/1000	2.9	1750	2550	3200	1100	1300	900	2750	1500
NC10158	1000	1500	800	2.9+3.3L/1000	2.9	1750	2800	3200	1100	1600	900	3100	1800
NC10208	1000	2000	800	2.9+3.3L/1000	2.9	1750	3300	3200	1100	2100	900	3450	1800
NC121510	1200	1500	1000	3.0+3.3L/1000	3.2	1950	2800	3450	1300	1600	1100	3900	1800
NC122010	1200	2000	1000	3.0+3.3L/1000	3.2	1950	3300	3450	1300	2100	1100	5060	2000
NC12XX10	1200	XX	1000	from 3.0+3.3L/1000	from 3.2	1950	XX	3450	1300	XX	1100	XX	XX
NC152010	1500	2000	1000	3.5+3.3L/1000	3.8	2250	3300	3450	1600	2100	1100	5800	2000
NC15XX10	1500	XX	1000	3.5+3.3L/1000	3.8	2250	3300	3450	1600	2100	1100	5800	2000

- Power Voltage:220V
- Air Pressure:0.5-1.0Mpa
- Filter Accuracy:0.3μm
- Air Supply:0.12-0.45m³/min

- Temperature Range:18-22°C
- Hourly Temperature Cycle:1°C/h
- Thermal Gradient:1°C/m
- Relative Humidity:55%-65%

High Accuracy Laser Scanner LS series

High Accuracy Laser Scanner LS Series



More Sample Points

- Min sample interval is 30 μm .

Higher Accuracy

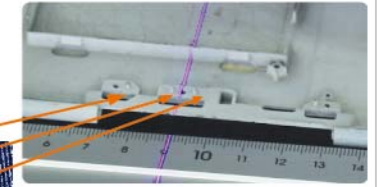
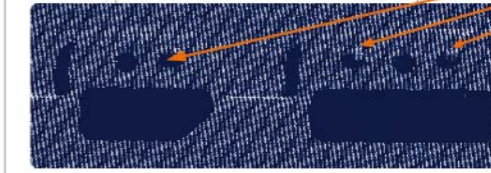
- It max accuracy could achieve 12 μm , leading other similar products, and could be used in checking accurate parts.



More Clearly In Details

- Real reduction 3D morphology of precision micro parts.

Clear recognition of detailed characteristics of support parts.



Measuring the fine structure of support features.



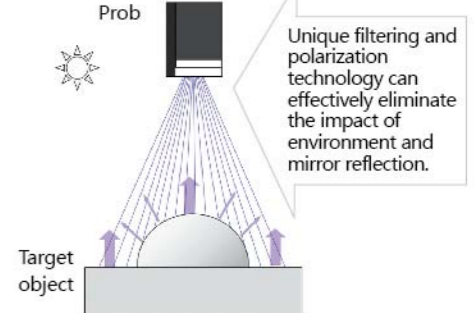
Measuring the key features of stamping parts.



More adaptable, it could measure most parts directly.

- Camera increases adjustment of wide range, adapt to different colors and gloss objects automatically, so that no surface treatment is required.

Including formed metal surface, black matte object, circuit board etc.



Specification

Model	LS20+	LS30+	LS50+	LS60+
Category	Semiconductor Laser(405nm)			
Power	Less than 2mW, Class II			
Measuring Distance (mm)	close 100	100	95	90
	middle 112	116	125	125
	far 125	135	165	175
Measuring Depth(mm)	25	35	70	85
Scanning width (mm)	closer 20	30	50	60
	middle 22	32	58	72
	far 24	35	70	86
Sample Density(Min sample interval)	30 μm	42 μm	75 μm	100 μm
Sample Points	768 points/line			
Sample Speed	12000 points/sec			
Probe Size	155×122×51mm			
Probe Weight	330g		345g	
Measuring Accuracy	12 μm	15 μm	30 μm	40 μm
Interface Compatibility	PH10T, PH10M, No probe head			

REVO A measurement revolution

REVO™ is a revolutionary measuring head and probe system from Renishaw, a dynamic head which incorporates Renishaw's innovative Renscan5™ technology.

Every process and feature in a REVO™ system has been designed to enable users to achieve previously unobtainable levels of inspection throughput;

- 5-axis scanning of complex forms, REVO™'s ability to gather very large quantities of accurate inspection data at ultra-high scanning speeds is invaluable.
- Very high speed gathering of touch points using the servo head's infinitely variable 2-axis motion.
- Innovative, patented tip-sensing probe technology allowing the sensing to be very close to the surface measured, yielding better accuracy.
- Novel calibration, Renscan5™ tip-sensing probe heads only require a single tip calibration to be accurate at all angles of rotation, typically saving several hours in the set-up routine.
- Infinite positioning and 5-axis synchronised motion, which facilitates access to features.

REVO™ 5-axis high speed, high accuracy measurement offers a wide range of benefits resulting in significant throughput improvements.

Two current applications have been selected, comparing actual cycle times of existing 3-axis measurement methods versus the REVO™ system.



Automotive cylinder head

690% improvement in throughput
The inspection sequence comprised 12 valve seats and three circular scans on each of the 12 valve guide bores.

Conditions	Measurement time	
3 axes scan speed: 15 mm/s	29 minutes, 13 seconds	
REVO™ scan speed: 400 mm/s for valve seats 50 mm/s for valve guide scans	3 minutes, 42 seconds	

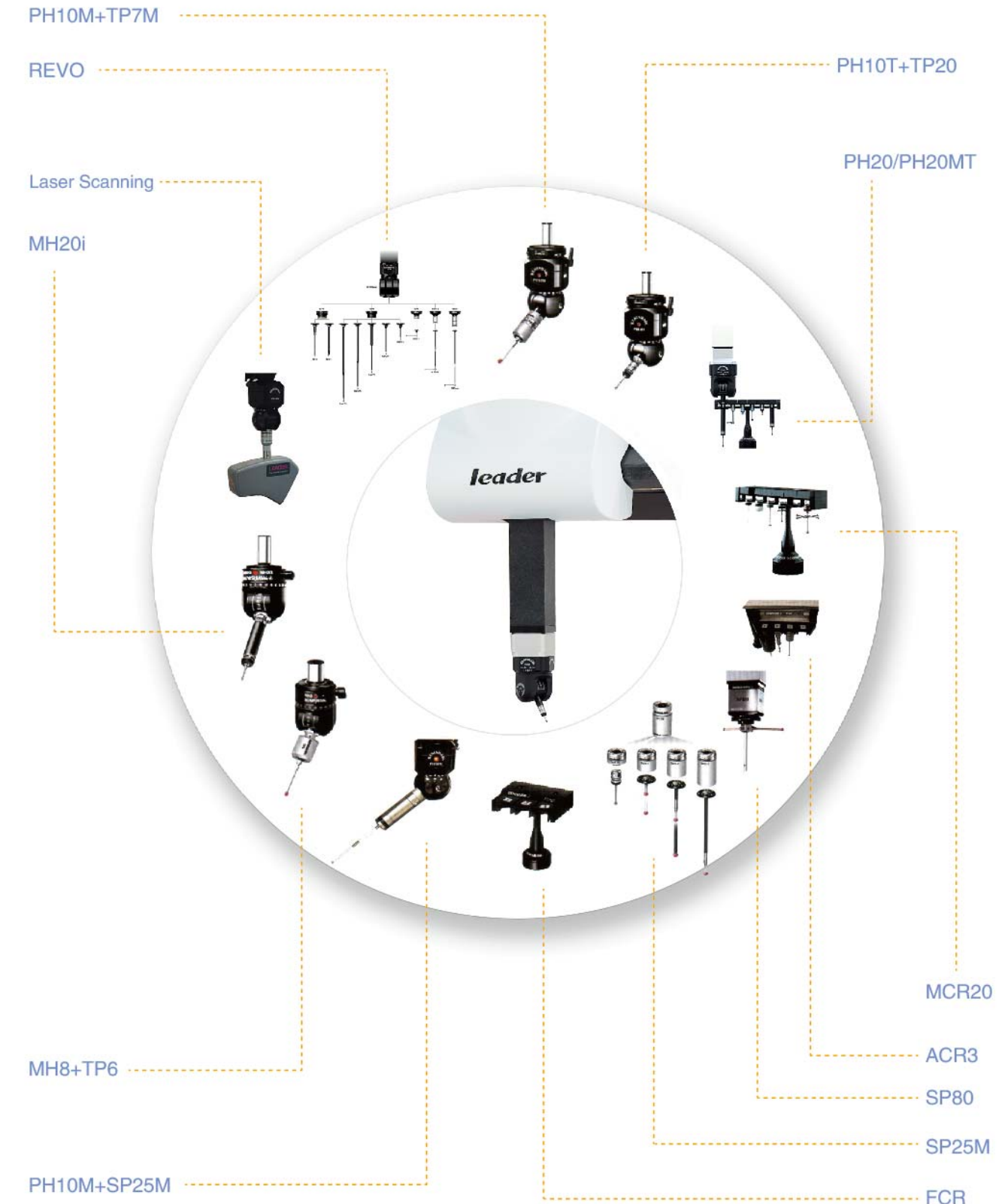


Aero engine blisk

922% improvement in throughput
The inspection sequence comprised nine sectional scans of the airfoil profile, eight longitudinal scans on the blade, two scans of the root profile and a single scan on the annulus profile.

Conditions	Measurement time 1 blade	Measurement time All 29 blades
3 axes scan speed: 10 mm/s	46 minutes	22 hours, 14 minutes
REVO™ scan speed: 200 mm/s	4 minutes 30 seconds	2 hours, 10 minutes, 30 seconds

Probe Hard System

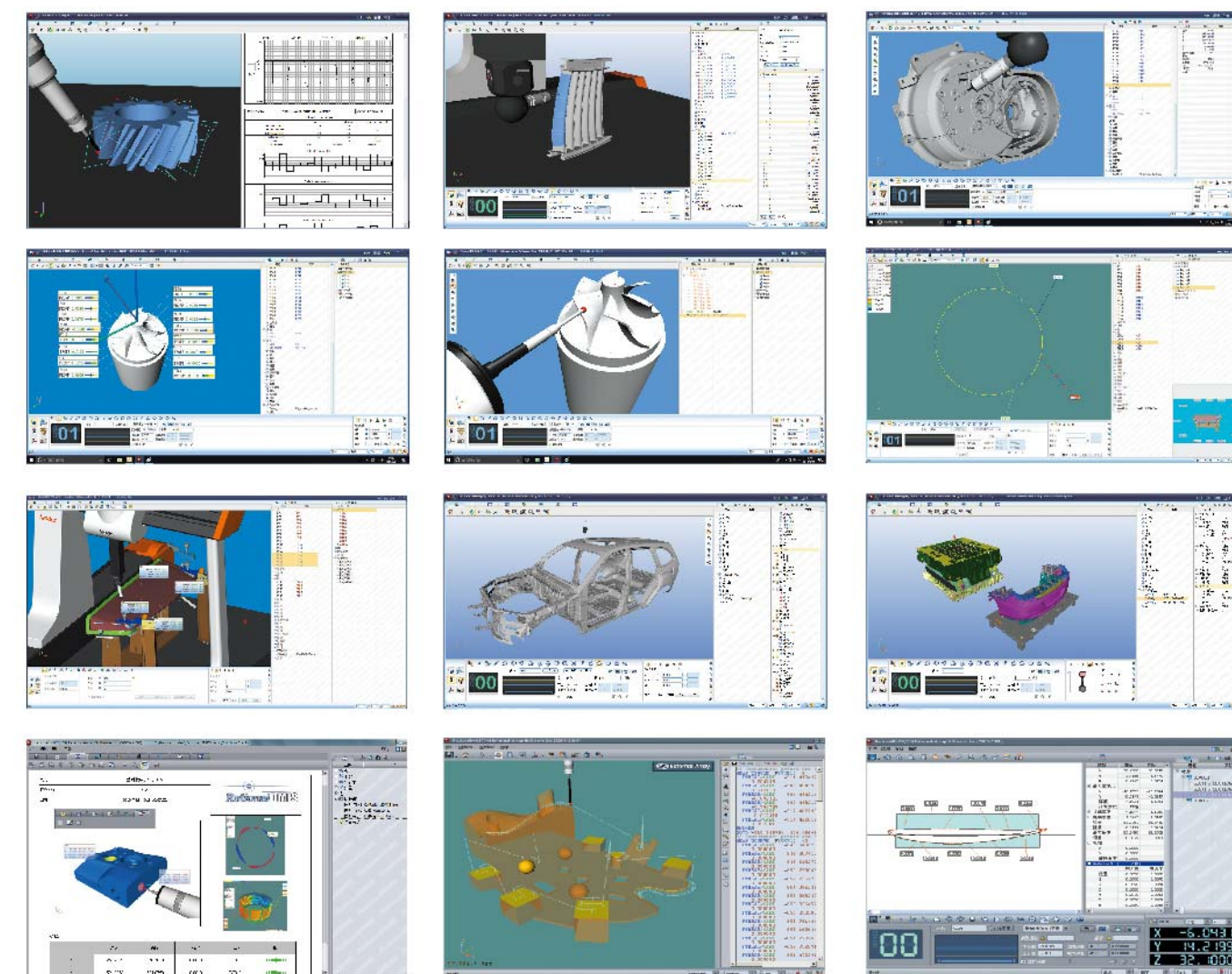
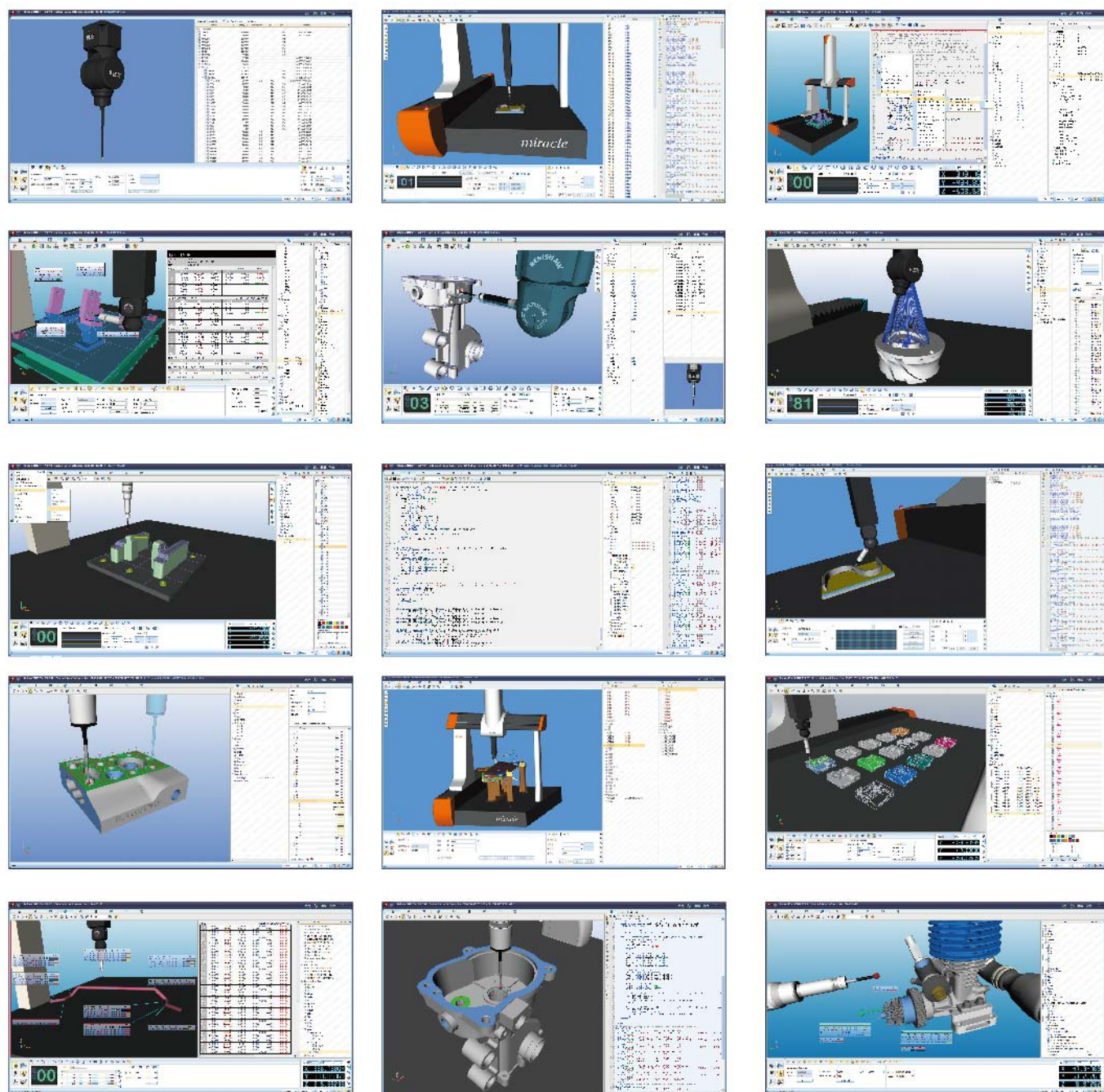


AMERICA
RATIONAL-DMIS
FOR WINDOWS
SOFTWARE
RATIONAL-DMIS

Rational DMIS is one of most professional CMM software created by America Company External-Array Software, Inc. Rational DMIS passed DMIS standard ISO22093:2003 and PTB certificated, it can support I++. It can work with Renishaw UCC controller and other famous controllers. Now Rational DMIS become one of most popular CMM software in China and world.

Rational-DMIS provides advanced capabilities which include:

- 32/64bit
- User-friendly Windows(tm) operating system
- Unique interactive 3D graphics engine
- Computer-simulated CMM environment for off-line programming
- Powerful, built-in analytical reporting capabilities
- Built-in intelligence that automatically names features as They are measured
- Sophisticated probe & part alignment management system
- Straight forward tools for bi-directional linking of CMMs with any CAD system using either IGES or DMIS
- Handling of 2D, 3D, wire-frame, and surfaced CAD files
- Self learning programming, easy to operate
- Measurement of point, line, plane, circle, sphere, cylinder ,cone, ellipse, ,curve, slot, surface etc.
- Construction: project, bisect, intersect ,angle between mirror ,bestfit ,move, parallel to ,perpendicular to ,offset
- Tolerance: straightness, flatness, circularity cylindricity, , iconicity , Perpendicularity, parallelism, angularity, 2D and 3D position, Capillarity, run out etc.
- Measuring for sheet and metal, the thickness compensation
- Integrated TP-Scan point-point scanning and more ways scanning
- Optional: blade, gear, cam, pipe, SPC, CCD, laser scanning modules



APPLICATIONS

APPLICATIONS

We share metrology experience with customer all over the world.

Leader Metrology have sales and service center in UK、German、Oenmark、Brazil、Argentina、Russia、Thailand、South Korea、India etc.





✔ Leader also supply CMM to:

Upgrade and reconstruction of measure system

It makes whole measuring engine upgrade modern level through equipping most advanced measure and control system with latest measure software; meanwhile, the cost is only 1/4-1/3 of buying new machine.

Calibration service

It can make your measuring engine keep high precision through periodic calibration and modification that also guarantees reliability of measuring.

Special Software

Leader has strong capacity to develop software and has much special software for option including lamina measuring software, cam measuring software and screw thread measuring software; moreover, the company can design special software system for clients.

Contract Service

High level periodic maintenance guarantees creditable operation and extends service life of measuring engine.

Skill training and communication

Users can enhance testing skill through professional training; meanwhile, users can enhance capacity of solving difficult problems through periodic conference for users to communicate operation experience.

Testing and program service

Skillful software and application engineers of Leader will offer you testing program of difficult parts or technology guide momentarily.

CMM Advice

Leader Metrology have professional technology engineer and we can give you professional suggestion on CMM model choosing and make all sets CMM scheme

Internet long-distance service

The company offers clients excellent service through Internet that can save your money and time. The company can finish many procedures online including submitting questions, technology support, software upgrade and technology training and so on.

Abundant spare parts

The company offers abundant spare parts of measuring engine and point gauge supply that guarantees enough supply for users.

Special clamp

The company can offer clients soft multi-function clamps that can simplify your measuring technology and enhance measuring efficiency and precision.